

the Mainstay

News & Events of the Seamen's Church Institute of Newport



VOL. II 2010

Construction Update!

2010 will certainly be remembered as a milestone in the history of Seamen's Church Institute.

After years of concentrated effort for our ambitious *History with a Heart* capital campaign to raise \$2.5 million, construction began in January of this year and has continued at an accelerated pace ever since.

The most visible improvements to date are the elevator tower on the outside wall facing Bowen's Wharf, and the complete renovation of the Aloha Café kitchen and counter. This month, work is moving along quickly on the third floor, including the creation of two new bedrooms (*in what once was the Superintendent's apartment*) as well as new bathroom and shower room facilities to accommodate future guests with disabilities.

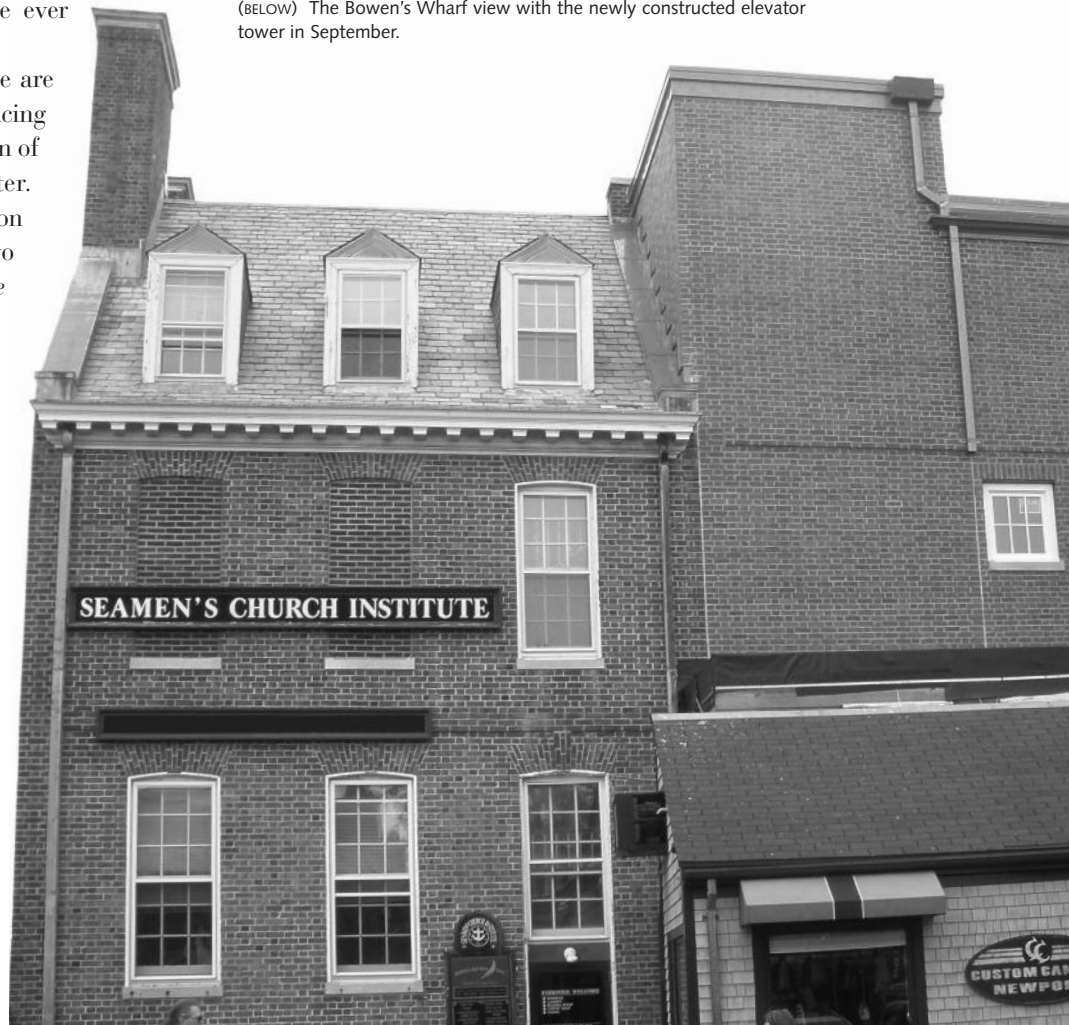
We are anxiously looking forward to the installation of the elevator by late November, and placement of 260 engraved recognition bricks on the interior wall opposite the elevator in the Bowen's Wharf entrance by mid-December.

The Aloha Café re-opened just after July 4th weekend, and the totally new kitchen, complete with new appliances, has made a significant difference in work-space efficiencies. Although redesigned, the counter area still has



(ABOVE) The outside wall facing Bowen's Wharf in January 2010 prior to construction.

(BELOW) The Bowen's Wharf view with the newly constructed elevator tower in September.



continued on page four...



BOARD OF DIRECTORS

The Rt. Rev. GERALYN WOLF
Bishop of Rhode Island
Honorary Chair

Peter A. Gerard
Chairman

David C. Brown
President

Richard Thursby
Vice President

Capt. Joseph M. Davis, Jr.
Secretary

John H. Ellis
Treasurer

Richard Grosvenor
President Emeritus

Ronald J. Ackman

Henry H. Anderson, Jr.

Paul Callahan

Kendall G. Chen

Margaret D. Comfort

Capt. George W. Crowninshield, USN, Ret.

R. Michael Curran

Robert H. Dewhurst

Thomas K. Flynn

James H. Gibson

Mary Gilbane

David Grant

Richard C. Grosvenor

Stephen B. Ham

William Leatherman

The Honorable Julliette C. McLennan

Stuart K. Mills

Carol O'Malley

George Pike

Caroline Slee

Robert S. Walker

Barbara F. Wright

18 Market Square
Newport, RI 02840

PHONE: 401.847.4260

FAX: 401.847.4284

CAFE: 401.846.7038

seamensnewport.org

Seamen's Welcomes New Superintendent

The SCI Board of Directors appointed **Tom Bair** as the Interim Superintendent as of July 1st following the retirement of Jack Grant who served in that position since 2002. Tom brings an extensive background in financial services and investment management to his new role. He also has been an active participant in the Episcopal Church in New York, Newport and Providence since 1978 in a variety of roles, from Vestryman to Stewardship Chair. Tom has quickly become fully engaged in our major construction project now underway, the operations of the Aloha Café, and promotion of Seamen's mission and activities. Although a resident of Providence, where he lives with his wife Bishop GERALYN WOLF, Tom has been actively introducing himself to the Newport waterfront community and visitors to the Seamen's facility. The months ahead promise to continue keeping him busy as he learns the ropes and becomes the chief advocate for this unique organization.



A note from Tom...

On a recent July Sunday afternoon here at SCI, I watched an East Indian young man, dressed in his steward's department uniform, ascend the Market Square entrance stairs and enter the foyer. His bright name badge said, 'Rajiv'. He was a crew member of one of the two large cruise ships that were at anchor in the harbor. He looked at me, flashed a wide toothy smile and asked me, "May I use

the telephone? They told me I could use the telephone here and I must speak to my fiancé and my family, if you please? Yes? Am I in the right place? I have a calling card and only need telephone. Yes?" I said, "Yes, indeed, this is the place! Follow me," and led him to the office where he excitedly began the routine of calling card protocol. When through with that he flashed his smile, gave me a thumbs up and said wholeheartedly, "Oh, great!"

Flashback forty years ago to August of 1969. A young seaman from the steward's department of a tanker that was lightering in Narragansett Bay, at anchor just north of the newly completed Pell bridge, walks up the same set of stairs and into the foyer of the Seamen's Church Institute, intent on making a phone call home to Grafton, MA. He was met with the same hospitable greeting. That young seaman was me!

Rajiv was just as grateful for the hospitality and service of Seamen's that Sunday in 2010 as Tom Bair was on that day in 1969. Some things, thankfully, don't change!

When they founded The Seamen's Church Institute in 1919, Edith and Maude Wetmore certainly did not imagine the world as we know it today with its space exploration, nuclear power, common place worldwide air travel, real time communication of events from the other side of the planet, computerization affecting every aspect of life and all of the other multitude of changes in day to day human life that have happened over the last 91 years. In terms of technological change, we live in a profoundly advanced world from 1919.

Nonetheless, the simple legacy of service, inspired by the church, and made manifest by these two sisters and those who followed after, lives on in our work today. It has not changed. It has permanence. The original charter of the Seamen's Church Institute calls for the 'moral and mental improvement' of the men and women who make their living on the water. Evidently, Edith and Maude saw that there was room for improvement from what they saw in the life of seamen and naval personnel at that time. We now communicate our mission of human service through making good on the promise of keeping 'a safe haven for the men and women of the sea'.

I am very grateful to have the privilege of continuing in this good work with all the other great people who labor here, staff and board of directors!

4TH ANNUAL ROCK THE DOCKS

Lobsterfest raises \$28,000 for Seamen's!

In spite of some challenging weather on August 22nd, the fourth annual Rock the Docks event, co-chaired by board members Carrie Slee and Peggy Comfort, was held under a tent at Fort Adams. SCI board members served dinner to 150 guests who came out to support Seamen's charitable mission.

"Rock the Docks is a grass roots event run and staffed by our board and volunteers, from the table cloths and placemats **Mary Gilbane** provided, to the 150 ears of corn shucked by **Mike Curran** and cooked by **Bill and Elizabeth Leatherman** and **Kim Comfort**, to the coffee brewed by **Dick Thursby**. We rolled up our sleeves and did the work and the result was that 90% of the funds raised went directly to Seamen's Church Institute," declared **David Brown, Board President**. "Every board member played a role in our success in raising just over \$28,000 tonight." As part of the evening's festivities, board member and capital campaign chair **Peter Gerard** auctioned naming rights for counter stools in the recently renovated Aloha Café and generated pledges for \$9,000 toward holiday gift cards for Newport's neediest families.

The fundraising success for this event was possible with the generous support of the SCI Board members and several vendors. **Ronni Fatulli's Aquidneck Lobster** and **David Spencer** of the **Lobster Cooperative** contributed over 150 cooked lobsters to Rock the Docks. In total, over \$20,000 in donated goods and services were provided by **Fort Adams Trust, Museum of Yachting, Newport Tent Company** and **Karen & Bill Corcoran, OLDPORT Marine, Spark Restaurant & Catering, The Parlor LLC, Narragansett Beer, The Embroidery Team** and **Team One Newport, Exquisite Events of Newport, Frank Field** and the **Museum of Yachting**.



(TOP LEFT TO RIGHT): SCI Board members Mary Gilbane, Rick Grosvenor and Peggy Comfort

(MIDDLE LEFT TO RIGHT): Board Member Peggy Comfort, Cate Meffert and Board Member Carrie Slee in Lobsterfest attire

(BOTTOM LEFT TO RIGHT): Paul Zimmerman with SCI Board members Mike Curran, Paul Callahan and Board President David Brown

2010 Maritime Scholarship Award

This September, **Kaitlyn M. Nanartowich** of Newport entered her first year of study at the Massachusetts Maritime Academy in the Marine Safety and Environmental Protection program as the 2010 recipient of a \$1,000 scholarship from the Seamen's Church Institute. Kaitlyn graduated in June from the Prout School in South Kingston and seeks to devote her life to preserving the marine environment.

"**The Leonard W. & Katherine C. Hayward Memorial Scholarship** was established in 1998 by Seamen's Church Institute to support students of all ages from Newport who are preparing for employment in the maritime occupations," explains Scholarship Chairman **George Pike**. "We were impressed with this young woman and her obvious interest in pursuing a career related to our oceans and how to protect them. It is our pleasure to offer our scholarship assistance to her, our first female recipient." Other members of the 2010 Scholarship Committee were **Mary Beth Pike** and **Robert J. Healey**.

Financial support for the Hayward Memorial Scholarship is provided by the SCI to honor "Bill" Hayward, a World War II sailor and past president of the Seamen's, and his wife, Kitty, an ardent volunteer for Seamen's who shared her husband's enthusiasm for providing educational opportunities to area residents.



(LEFT TO RIGHT) Scholarship Committee Chair, George Pike, scholarship recipient Kaitlyn Nanartowich and Dick Thursby, Vice-President of the SCI Board of Directors.

continued from page one...

stools for Café customers to sit and enjoy their breakfast or lunch. The Café is still the best deal for hearty, affordable meals on the waterfront in a friendly atmosphere with the added feature of helping support Seamen's overall mission.

When the complexity and scope of this major construction project is considered, especially in a building on the National Register and in just under a year, it is a testament to the hours of advance planning, the ongoing oversight by Board member Stuart K. Mills, and the construction management by Farrar Associates, Inc.

There will certainly be a grand celebration and open house sometime in January when all the dust has settled and everything is finally in place. We'll be posting the information on our website, on Facebook, and through Constant Contact, so watch for the date and details!

(TOP, LEFT TO RIGHT): Tom Bair, Ed Walsh, Anna DeSousa, Cynthia Serino, Lainie von Plachecki at the new Café counter.
(INSET): The counter in March 2010, prior to construction.

(BELOW): The new kitchen (INSET): The kitchen in March 2010, prior to construction.



Be Part of SCI's History!

Although we are looking forward to displaying an impressive arrangement of 260 engraved bricks as part of our Recognition Wall in December, there is still an opportunity to order your own engraved brick and be part of SCI's history! We have begun a second order for 50 additional bricks and have already planned for their inclusion on the Wall sometime in the late spring.

Create a message that will be seen for years to come!
A limited number of Recognition Bricks are still available for just \$250 each!
Visit our website for an order form or call 401-847.4260 for more information!

Helping to make it happen!

Our *History with a Heart* capital campaign may be coming to a close, but it has taken years of dedicated effort by our Board of Directors and the financial support of hundreds of donors who believe in the work of Seamen's Church Institute and what our organization represents within the Newport County community. During the summer, a series of *Hard Hat Receptions* were scheduled and hosted by the Board of Directors to provide donors with updates on our construction progress as well as tours of our ever-changing facility.



Board President David C. Brown gives donors an update on construction and the campaign in May before a tour of the changes.

Since early January, we've been impressed with the countless number of individual tradesmen and workers who have played a part in the renovations going on at Seamen's. When our official *Grand Opening* is planned in early January, all our contractors and vendors will be recognized and invited to join us in the celebration of their great work on our historic facility.

SCI construction workers
(LEFT): Jeff, John & Elliot; (MIDDLE): Adrian; (RIGHT): Construction Superintendent, Bob Murgo & Peter



SCI'S HIDDEN TREASURE

The Chapel of the Sea

One of the truly special features within Seamen's is the Chapel of the Sea on the second floor, a delightful surprise for visitors to our facility.

Given in memory of Marie Caroline Helene Jeanne Caroline de Keridern de Trobriand Post by her daughter, the Chapel was designed and executed by artist Durr Freedley in 1933. The Chapel of the Sea is his largest completed work of art and is often studied by art students. In fact, students from area high schools often include the Chapel as one of their field trips for art and museum studies programs.

When designing the Chapel, Freedley was instructed to consider a possible relocation to the Naval War College in the event that Seamen's Church Institute ceased operations and the building was given to another non-profit agency (*as required by the Wetmore sisters when they donated the new building at 18 Market Square to Seamen's in 1919*). Consequently, the walls, floor, ceiling, and altar were created in slabs of concrete or small parts pieced together, allowing for a full dismantling if ever necessary.

Durr Freedley moved to Newport, RI in 1930 and although best known for his portraits, he also was an interior decorator and a mural painter. He did murals for Trinity Church in New York City and St. John's Church in Newport. His death in an automobile accident in Massachusetts in 1938 cut short a career that had promised so much more to the world.

The stone-tiled floor is designed to suggest the bottom of the Sea and is inlaid with images of sea shells and sea weed. In the center of the floor is a compass of good qualities for a good life: *Duty, Faith, Honor, Obedience, Love, Hope, Courage, and Charity*. Over this is the anchor which is one of the symbols of Seamen's Church Institute. In the center of the ceiling, a cartouche shows the Hand of God ruling over the four elements, shown by the emblems of Earth, Fire, Air and Water. The altar is hung with an embellished carved sail-cloth held by nautical knots — the models for which were made by sailors at the Newport Training Station. This altar-hanging and niche are etched with subjects relating to the life of Jesus and Christ's ministry among fishermen and on the Sea.

But, it is the frescos on the four walls of the Chapel that draw the most attention. Saints long associated with the Sea who have for centuries been venerated symbols of faith by seafarers are depicted. Inserts of biblical events, such as Jonah escaping from the whale and Noah in his Ark, welcoming home the Dove, are also well illustrated. Two archangels face the altar on either side, watching over travelers by Sea and Land. To St. Michael, on the right, are dedicated rocky islands and coastal promontories throughout the world serving as lighthouses and sailing marks for a thousand years. On the left, St. Raphael guides and accompanies all travelers by land. The 26 saints painted on the walls have particular relevance to the Post family as well as to seafarers and pilgrims for protection on their various journeys.

The Chapel of the Sea was restored in 1987 (*the north wall was almost washed away due to a roof leak*) through a generous grant from the Annie Laurie Aitken Charitable Trust; Mrs. Aitken was the mother of Martha "Sunny" von Bulow. Plans are underway to replace the wiring and lighting behind the ceiling cornice to enhance the verse from Psalm 107: *"They that go down to the Sea in ships, and occupy their business in great waters; These men see the works of The Lord and His wonders in the deep. For He maketh the storms to cease so that the waves thereof are still. Then are they glad because they are at rest, and so He bringeth them unto their desired haven."*



TOP: The altar of the Chapel of The Sea.

ABOVE: Saint Barbara remembered for her protection of sailors, holds a lighthouse as the Tower which is her symbol of protection. St. Barbara bears the likeness of the woman in whose memory the Chapel was given.

PHOTOS BY WARREN T. DEWHURST, FROM A SERIES OF THE CHAPEL OF THE SEA.

The Chapel of the Sea
is available for rental for small
weddings, baptisms or memorial services.
The Chapel can accommodate
20 standing or 15 seated individuals.

.....
Holiday greeting cards with scenes from
the Chapel of the Sea will be available
for purchase during this coming season.

Annual Meeting

Friday, November 19, 6:00–8:30 pm

The 91st Annual Meeting of the Seamen's Church Institute of Newport will be held at 18 Market Square. A brief business meeting will precede a reception and visual chronology of the transformation of our historic building over the last year as we celebrate our long-awaited elevator to allow access to all levels for everyone!

Holiday Meals

The coming Holiday season once again allows Seamen's to live our mission by extending an open invitation for anyone in the community to join us for Thanksgiving Day Dinner, Christmas Morning Breakfast Buffet, and a Holiday Breakfast Buffet to be held between Christmas and New Year's Day. Last year, an estimated 450 guests were served at these festive meals which involve dozens of SCI Board members, staff and volunteers. Financial and food donations from individuals, community organi-

zations, churches, and businesses in the area make each of these events possible and very special to everyone involved as well as being very much appreciated! Contact Tom Bair at 846-4260.



Winter Community Concert

Sunday, February 20, 2011
Newport Marriott Hotel, 7–9pm

We are once again delighted to partner with the **Rhode Island Wind Ensemble** and **People's Credit Union** for another winter Community Concert. This free concert is our gift of appreciation to the community for all the support Seamen's receives over the year. More information will be available on our website in late December. We encourage everyone to join us for this special evening!



Pleased to be Recognized!

Newport In Bloom

Newport In Bloom recognized our Memorial Garden at Seamen's with a Special Mention Award. Credit goes to **John O'Brien**, our Facilities Manager, for keeping our planters and gardens in full colorful bloom all season. And, thanks to dona-

tions from two SCI supporters, we have added tables and chairs to the Garden for an outdoor lunch or more comfortable respite on the waterfront.

Facilities Manager,
John O'Brien in the
Memorial Garden with
SCI's Newport in Bloom
award.



Yankee Magazine

The editors of *Yankee Magazine* selected Seamen's Church Institute as a "Best of New England" Editors Choice in the 2010 Travel Guide to New England in their special May/June issue. *Yankee* reaches nearly 2 million readers nationwide and hopefully the issue will inspire some new visitors to our unique and historic place on the waterfront. Under the banner of *Best Bargains*, we were cited as shown above.

(LEFT TO RIGHT): Aloha Café Staff
Lainie von Plachecki, Jay Guadagni,
Cynthia Serino and Ed Walsh
with our Yankee Magazine
recognition.



1st Annual Fishing Tournament Benefits Seamen's

In September, twenty Aquidneck Island anglers and eight boats confronted 4-7 foot waves and 10-20 knot southerly winds in the first annual **IYAC Scramble Fishing Tournament** in the waters off of Newport to benefit the Seamen's Church Institute. Anglers competed for prizes across 5 categories of fish, but the weather forced most competitors to fish the morning bite inside Castle Hill in order to remain sheltered from the high winds and wave conditions. On Saturday evening, contenders convened at the IYAC on Lower Thames Street for the 'official review' of all fish caught.

Jim Malinson of Middletown was declared the winner with a 29.75 inch bluefish; a variety of other prizes were presented. Prize donors and sponsors included **Flo's Clam Shack**, **Sam's Bait & Tackle**, and **Saltwater Edge**. Seamen's certainly appreciates everyone who was involved in this great tournament and we'll hope next year brings better weather and bigger fish!

WATERFRONT SURPRISE: The Seamen's Church Institute of Newport.

This 90-year-old institution for travelers offers public restrooms; the very welcoming Aloha Café, with homemade sandwiches and soups; and the captivating Chapel by the Sea, with frescoes of maritime-related saints and nautical motifs from floor to ceiling.

Staying connected...

Over the summer, the SCI website got a fresh new face with an interactive calendar of events, and an opportunity to post more photos. We've also added a PayPal feature to the site to allow for the convenient membership in the Friends of SCI. Through social networking options such as Facebook, Constant Contact, and Twitter, we've also been able to share what's going on at Seamen's as well as the great daily specials at the Aloha Café. If you haven't yet done so, please check us out on any of the above and let us know your email address so we can make sure you don't miss a thing!

Visit Our Website:
www.seamensnewport.org

Seamen's continues relationship with the Navy...

Since our founding in 1919, Seamen's Church Institute has maintained a close relationship with the Newport Navy Base and War College. With the re-opening of the Aloha Café, we're delighted to welcome back the regular NWC workshops and seminars meeting in our Library and Mariner's Lounge. In August, Seamen's was well represented at the Newport Officer's Spouse's Club (NOSC) Social at the Naval War College. This annual event, held at the Officer's Club, is designed to introduce spouses of active duty officers and reservists, and retired military officers, to the many non-profit activities and organizations in the area. In October, we participated in the Newport County Chamber of Commerce promotion to the U.S. Naval Academy Preparatory School students and their families during Parents' Weekend.

The Aloha Café – To-Go!

The reopening of the Aloha Café just after July 4th weekend gave us the perfect opportunity to provide sandwiches and lunches-to-go to a variety of sailing races and regattas with the New York Yacht Club Atlantic Round, the Ida Lewis Yacht Club, Sail Newport, and the Clagett Regatta. The response to our great sandwiches has been wonderful and has brought new and needed attention to the hearty and affordable menu selections at the Aloha Café.

Support the Institute

Recognition Bricks

Be a part of the Recognition Wall with an engraved brick purchase for \$250!

Permanently recognize your business, family, pet, boat, or honor someone special. In addition

to the engraved recognition brick, each order receives a keepsake mini-replica brick. Wouldn't this be a special Christmas gift?

Download the order form at
www.seamensnewport.org
or contact the Seamen's office

Friends of the SCI

Our annual membership program allows SCI to continue to provide services to boaters, visitors, and residents from throughout the community. Join on our website via Paypal:
www.seamensnewport.org

ANCHOR SOCIETY:	
HELMSMAN	\$1,000
STARBOARD WATCH	\$500
PORT WATCH	\$250
MARINER	\$100
FRIEND OF THE HARBOR	\$50
FRIEND OF THE SEA	\$25

Support SCI – Now & in the Future

As a non-profit 501(c)(3) organization, the Seamen's Church Institute relies on the support of individual contributions and regional business donations. Please consider giving options such as:

- * Leave SCI in your will
- * Memorial Donations
- * Bequests & gifts of stock
- * Contribute through United Way; SCI's donation number is 2770

Clothing & Other Donations

Gently used and new clothing, especially warm winter items are welcome for distribution to fishermen, dock workers, and anyone in need. Clothing for men and women is appreciated (*please donate children's clothing and toys to other agencies*). Towels and hotel-sized toiletries are always welcome.

Volunteer

SCI volunteers can make a real difference! Contact us for volunteer opportunities.

Reply Form

To donate please send this reply form to
The Seamen's Church Institute in the enclosed envelope.

NAME _____

ADDRESS _____

TELEPHONE _____

EMAIL _____

Donate:

- I would like to join **Friends of the SCI** at the _____ giving level.
- I would like to support the work of Seamen's in the amount of \$ _____
 - My donation is enclosed payable to *The Seamen's Church Institute*.
 - Please charge my: VISA Mastercard

ACCOUNT NUMBER _____

EXP. DATE _____

SECURITY CODE _____

SIGNATURE _____

If you have a question,
comment or suggestion
please feel free to
contact us...

ADMINISTRATIVE STAFF:

Tom Bair
Interim Superintendent

Anna DeSousa
Office Manager

Deedra Durocher
*Administrative Assistant &
Special Project Coordinator*

John O'Brien
Facilities Manager

18 Market Square
Newport, RI 02840

PHONE: 401.847.4260

FAX: 401.847.4284

CAFE: 401.846.7038

WEB: seamensnewport.org

The Seamen's Church Institute of Newport was founded in 1919 as a Haven for Seafarers and has been a vital resource on the waterfront for 91 years. The primary mission is serving those of the Sea. The seagoing population has enhanced the quality of life on Newport Harbor, making it a valuable and respected marine tradition.

Open to the public 365 days a year, the Institute welcomes the community and visitors from the world over to this historic gem in the heart of Newport's waterfront district. As a non-profit organization, The Seamen's Church Institute relies on the good will of the community. **All contributions are tax-deductible as allowed by law.** Your support enables the Institute to continue providing its unique and necessary services.

SCI
Facilities
& Services

Lodging

Shower & Restroom Facilities

Laundry Facilities

Library

Internet Access

Aloha Café

Soup-to-the-Docks Programs
in Newport & Galilee

Chapel of the Sea

Memorial Garden

Hayward Maritime

Memorial Scholarship

the Mainstay
VOL. 11 2010

Non Profit Org.
U.S. POSTAGE
PAID
Permit No. 158
Newport, RI

THE SEAMEN'S CHURCH INSTITUTE
18 MARKET SQUARE
NEWPORT, RHODE ISLAND 02840